

## KERI anchor

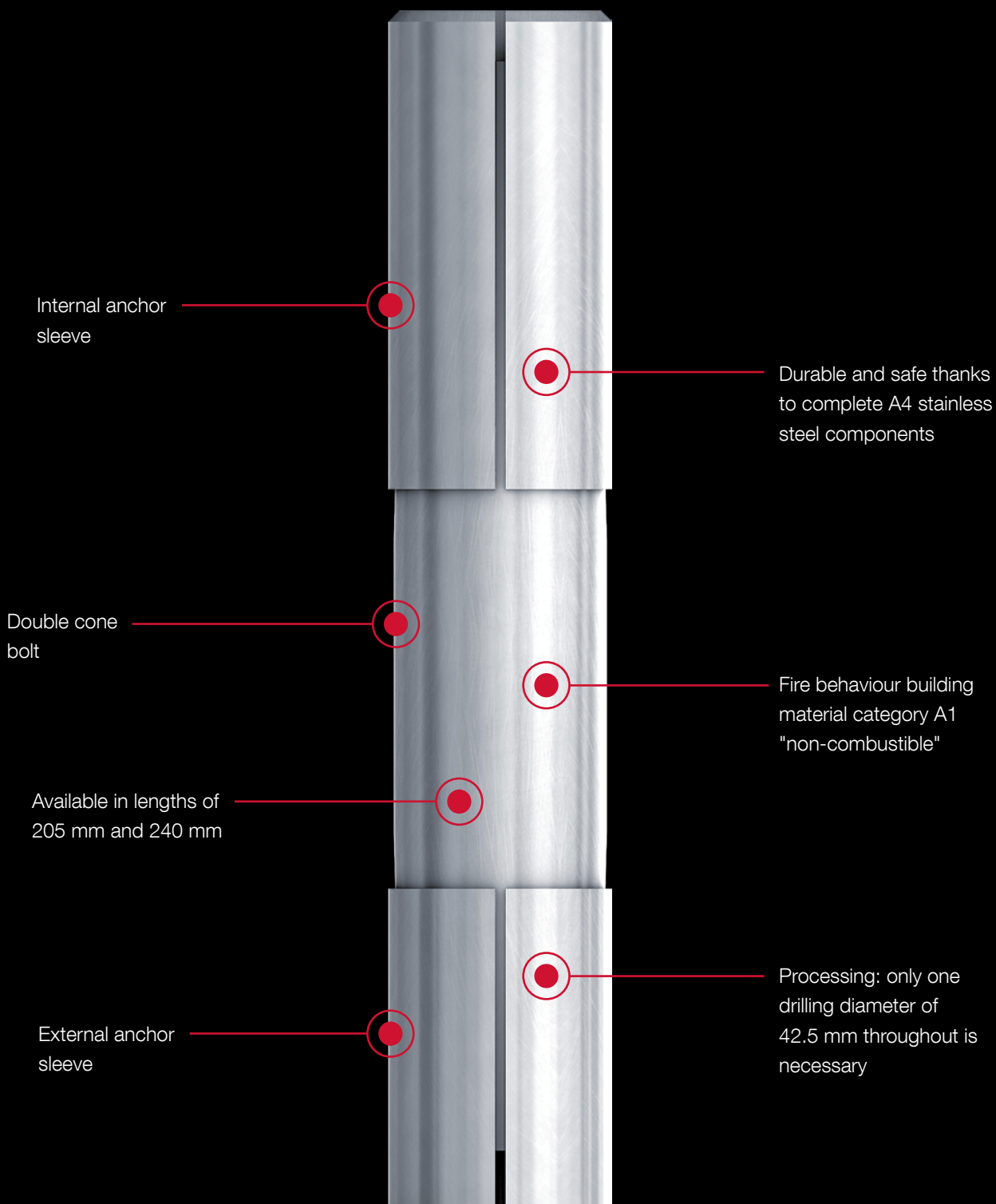
Perfect refurbishment of three-layer exterior walls by rain screen anchors



Bringing it together.

# KERI anchor

Subsequent fixing of rain screens



## KERI anchor



### Application range

- > Subsequent fixing of rain screen
- > Horizontal and vertical anchor arrangement

### Characteristics

- > A4 stainless steel
- > Immediately resilient

### Benefits

- > Easy and quick installation
- > Low noise nuisance to house residents due to core drilling, no hammer drilling
- > Directly loadable thanks to purely mechanical anchoring

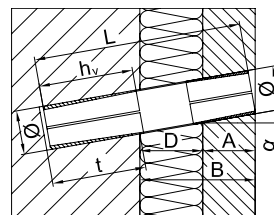
### Notice

The EJOT service team will gladly assist you.  
Phone: +49 351 4 53 67-0

### Technical data



### Certifications



### Technical data

permitted transverse load load $F_0$	8.5 kN
Permissible bending moment $M_z$	1070 Nm

Order description	Length [mm]	diameter [mm]	Fastening thickness B ≤ [mm]	PU [pieces]	Price/100 [EUR]	Article number	EAN
KERI-40x205	205	40	128	10	-	9710000205	-
KERI-40x240	240	40	163	10	-	9710000240	-



**EJOT SE & Co. KG**

**Market Unit Construction**

In der Stockwiese 35

57334 Bad Laasphe

T +49 2752 908-0

F +49 2752 908-731

[bau@ejot.com](mailto:bau@ejot.com)

[www.ejot.com](http://www.ejot.com)